

DRAFT MINUTES OF THE PARISH COUNCIL MEETING

Thursday 17 OCTOBER 2024, Village Hall, 7pm

Present Parish Councillors – Nick Ralls (Chairman for meeting) Alison Barker,
Paul Barnes; Clerk Susan Turner; Guest – Parish Lengthsman Gordon Hunt
Members of the public 2

1 WELCOME & APOLOGIES Apologies Charles Holroyd, Nigel Long, County and Ward Cllrs.

2 MINUTES OF PREVIOUS MEETING of 19 September; signing deferred, only one Parish Councillor present who was present at the last meeting.

3 DECLARATIONS OF INTEREST in items on the Agenda, none.

4 PUBLIC SESSION Two members of the public present, no issues raised.

5 REPORTS TO MEETING

.1 Brief emailed report from PCSO Andy Jones

Nothing to report from Upton Grey.

In the area of Greywell at 0200 hrs on 17 October, three persons wearing balaclavas made an unsuccessful attempt to gain access to a parked van; all three made off once the alarm sounded.

.2 County and Ward Councillor written reports **APPENDIX I**

From Ward Cllr report:

'New grant scheme to support borough's independent retailers: We have launched a £75,000 [Town and Village Centre Fund](http://www.basingstoke.gov.uk/town-and-village-centre-fund) www.basingstoke.gov.uk/town-and-village-centre-fund

Unfortunately it seems Upton Grey village centre businesses don't meet eligibility criteria.

.3 Parish Lengthsman October report

- All the Parish Councils assets are in good order.
 - I had put the remainder of the sawdust supplied by David Janaway along FP 12. I walked the path this morning and it is relatively dry, the sawdust has compacted down so is quite stable. I'm not sure how long this will last in this state. [Potential to source wood chip for future.]
 - On Sunday 06 October a work party was assembled to tackle the muddy FP along side of the pinch point by the pond along Weston Road.
 - This had been raised at a previous Parish Council meeting by David Janaway.
 - David and his son Robby supplied the machinery and the materials to make the job go like clockwork.
 - There were two lollipop ladies controlling the traffic and people were not held up for very long.
 - The digger driver Mark made a tricky job look easy and the soil was removed very quickly; gravel boards were installed to separate the earth and the scalplings were soon in place and whacked down.
 - If my calculations are correct there were 12 people that saw this to its conclusion.
 - Thank you to Sue and Bob for the supply of refreshments.
 - After returning all the equipment I think we were all home by 11am job well done.
 - Today I also walked FP8 from Cemetery Lane to Weston Road to look at the situation with the hedge from Holme Hill side of the path. The hedge is not of a very good quality it is a mishmash of all sorts of bits, nothing of any substance. It encroaches onto the FP in a lot of places and overhangs to the gardens on the opposite side of the path. Having said that some of the overhang is coming the opposite way. The property at the top furthest from the road has cut back the hedge and enclosed it with a chain-link fence.
 - In Church Street, the detritus opposite the old Vicarage has been cleared.
 - I cut away some of the scrub that was obstructing the 30mph sign along the Greywell Road.
- End of report*

6 HIGHWAYS AND VILLAGE MAINTENANCE

.1 Weston Road footway – Working party Sunday 06 October. **APPENDIX II**

See Parish Lengthsman report at 5.3 above.

Thanks to David Janaway and Gordon Hunt for organising, and to David and Rob Janaway for supplying machinery, men and materials.

TO RECORD The Chairman will send a letter of thanks on behalf of the Parish Council.

Als: 'It is fantastic that time and effort, and use of equipment, is freely given for the benefit of the Village. But where out-of-pocket expenditure is incurred, be it big or small – the Parish Council would wish to reimburse this.' Agreed this would be considered.

.2 Hedges and hedgerow maintenance

1. Estate hedge along Weston Road – report received that the hedge has been laid.
2. Hedges bordering FP8 from Weston Road *see Parish Lengthman report.*

Question raised with the Holme Hill Management Company re the maintenance of the hedge from the Holme Hill side of the footpath – Management Company will review.

Noting that:

- Map indicates Holme Hill communal open space only borders the first few metres of the path, the rest abuts individual gardens.
- A plan needed for winter cutting of most the hedges both side of the path.
- The last two years the County LM has cut back the path hedges from the sides in July - emergency measure to make passable - but not the right time to be hedgecutting.

.3 Weston Road ditches Background – Estate ditches cleared last January (by the Estate?). Ditches onwards to Weston Mark House cleared February.

NOTED The ditches have good capacity, quite wide and deep; to monitor road flooding, no reports of flooding so far this year.

NOTED The concrete grips need clearing. Scheduled for County Lengthsman 18 November. (These do function despite appearing raised above the road.)

.4 Weston Road verges The length of the South side of Weston Road to the Parish boundary is designated RVEI (Road verge of ecological importance). It's management requirement is for an April cut only. **APPENDIX III**

Last year the Estate verges were cut in October, the remainder to the boundary Dec 23 / Jan 24. (Not by HCC.) Whether to better facilitate ditching? (Estate verges again cut this Oct.)

Enquiry received from resident re the verges and ditches. Cllr Barker to respond.

.5 County Lengthsman – next visit 18 November, this is earliest available date. Tasks:

- To clear Weston Road grips as above.
- To tidy/clear around Village Hall and shop front.

.6 Speed limit reminder sign

Present schedule for six 'deployments', moved every three weeks.

- w/c 29 July - w/c 19 August Location 3 - Weston Road
- w/c 19 August - 9 September Location 1 - Bidden Road
- w/c 9 - 30 September Location 3 Weston Road
- w/c 30 September - 21 October Location 2 Church Street North
- w/c 21 October - 11 November Location 3 Weston Road
- w/c 11 November - 2 December Location 1 Bidden Road.

Discussion

- This sign (speed limit reminder sign) – ie flashes up the speed limit – appears dated.
- The speed indicator devices (SIDs) which flash up driver's speed are more effective.
- HCC (via district authorities) no longer offer a hire service. There are commercial companies who do.
- Westcotec are HCC's approved supplier for purchase, but many other suppliers.
- Cost of the smaller mini-SIDs (showing speed only) were in region of >£2.5K plus VAT (without data recorder).
- The larger signs with message or smiley face are heavier with bigger, heavier batteries.

ACTION Clerk to look at alternatives and costs.

7 PLANNING

.1 Planning and tree applications – Planning update at **APPENDIX IV**

- i No new applications for discussion.
- ii Enquiry raised with BDBC re the Landscaping conditions attached to the original approval for Manor Farmyard change of use to commercial with associated new buildings.

For signature (p2 of 3)

- .2 NOTED – Local consultation held in the Village Hall 17 October on proposals for converting the Cemetery Lane farmyard and barns to residential.
- .3 **Local Plan Update** (LPU) BDBC Councillor and Officer responses to the new NPPF consultation are published on the BDBC website. The website notes that the Local Development Scheme [LPU schedule] will be updated once the new NPPF is published.

.4 **Questions re Estate ground works and landscaping**
 NOTED Planning consent is required for ground works / earthworks, and would be required for any change of use of agricultural fields to golf-related uses.

8 FINANCE & GOVERNANCE

.1 **Accounts to date APPENDIX V** Bank reconciliation at 16 October = £39,679.36

Payments this month

39	BDBC (84016635) – Playground Insp-2024/25-amend	£53.04
40	Simone Systems Ltd – SLR sign Jul-Nov (6 moves)	£360.00
41	GH for AVS Fencing – Gravel boards (six x 3m boards)	£45.14

Income pending – Tennis subs £1,800.
 VAT reclaim £3,656.46

.2 **Budget update APPENDIX VI**

- i Grants budget at the moment has £2,744.88 remaining.
 From this, an expected request for Church clock maintenance (cost £185 last year); and potential for request for contribution to Hoddington 'Autumn Festival' Village Dance. (As agreed at meeting of 15 February 2024) *'The Parish Council will underwrite any loss made by the Dance event up to £1K.'*
 Subject to the above, there is potential for funding towards a SID from the grants budget.
- ii Pond budget – just short of £1.3K left, potentially towards further management / improvement of the marginal vegetation.
- iii Provisional 2025/26 Budget and Precept request to be considered at next (Nov) meeting.

.3 **Grant funding**

1. Application to Ward Councillor Community Grant for £3K (or up to £3K) for Village Hall toilets redecoration, unsuccessful.
 Response: 'We received a significant number of requests this year amounting to £15K. Sadly, not every request has been successful as we only have £6K available.'
2. Application to BDBC Community Infrastructure Fund for Village Hall solar panels – awaiting outcome.

9 FURTHER UPDATES / REPORTS

.1 **Parish Councillor training** – Planning training – looking for more advanced than introductory courses offered by HALC this year. Potential for Mulberry LAS (Local Authority Services) courses eg: *'The Future Shape of the Planning System – what's changing and what you need to be ready for'*.

ACTION To look for future course dates. <https://mulberrylas.co.uk/training-programme/>

.2 **Free standard-sized trees** including Elm trees (Dutch Elm Disease-resistant) offered to communities from Hants Forest Partnership. **APPENDIX VII**

10 NEXT PARISH COUNCIL MEETING

Thursday 21 November, 7pm in the Village Hall

Meeting closed at 8.20pm with thanks to all

For signature (p3 of 3) Date

APPENDIX I.II CLLR JULIET HENDERSON – HCC REPORT – OCTOBER 2024**Savings Programme 2025**

Please find attached my October report. I wanted to highlight the fact that you will be seeing a fair bit of coverage about the Savings Programme SP25. The consultation took place earlier this year. I know the retention of HWRCs (household waste recycling centres) and school crossing patrols, maintenance of vital community transport routes and the continued provision of homelessness grants to the end of their planned contract term are important to residents. I am continuing to push for continuation of these vital services.

The Leader Nick Adams-King stated: 'Before making any decisions, my cabinet colleagues and I will carefully consider the officers' recommendations in the context of the consultation responses, the feedback from the select committees and any deputations made to us.'

I will be making these points at the Cabinet meeting on the 14th October.

Winter Fuel Allowance

The Government has recently made the decision to restrict the Winter Fuel Payment to only pensioners in receipt of Pension Credit or other means-tested benefits.

HCC in a motion to full council resolved to:

Bring forward a Council-led local awareness campaign to alert those eligible of Pension Credit which in some respects will help access to the Winter Fuel Payment for those most in need.

- Request that the Council Leader write to the Chancellor of the Exchequer, urging a review of the decision to means-test the Winter Fuel Payment and asking the government to ensure that vulnerable pensioners, particularly those who do not claim Pension Credit, are protected from fuel poverty.
- Commit the Council to signing the 'Save the Winter Fuel Payment for Struggling Pensioners' petition being run by Age UK and to encourage all members to sign the petition themselves.
- Encourage local efforts to promote Pension Credit uptake through council services and partnerships with local charities and community organisations to ensure that all eligible pensioners in Hampshire are supported in claiming their entitlement.
- Make the commitment that all Hampshire County Council Libraries are designated under the warm spaces scheme for the winter of 2024/2025

Highways Updates: From Cllr Lulu Bowerman, Cabinet Member for Highways and Waste

We know just how important roads, and specifically their condition, are to the people of Hampshire and we're working hard to make them stronger – having invested extra funding so that we can make even more improvements to the 5,500 miles of roads that the County Council is responsible for. The additional £22.5m investment over two years, on top of the £89m we typically spend annually to maintain the roads has so far enabled extra crews, equipment and materials to be brought in to repair even more road defects, like potholes, more quickly, as well as improve the surface quality of many more miles of road. Latest data shows that between April and June this year, we've made good progress - having improved the surface of 345,655 square metres of road and repaired 18,505 road defects. And, with the autumn and winter weather in mind, 43,479 drains and gullies have also been cleared and cleaned, ready to cope with heavy rainfall. We'll soon be starting our winter maintenance season (from 1 October) and, as with previous years, our highways crews will be ready day and night to spread salt on the main routes when freezing road surface temperatures are forecast, in order to keep Hampshire moving. We know that work to make improvements to the roads can sometimes be inconvenient to road users, so we appreciate people's patience as we keep up the momentum on this vital work. We also wish to thank everyone who has reported road defects to us - such as potholes and other issues affecting the condition of the county's roads. Please continue to do so, because when you report a road issue to us, it means we can act more quickly to fix the problem and make our roads stronger. You can do this via the OurHants app (which can be downloaded from the Apple or Google play store) or online via the County Council's website

Reporting Highway Problems

Potholes: <https://www.hants.gov.uk/transport/roadmaintenance/roadproblems/potholes>

<https://www.hants.gov.uk/transport/roadmaintenance/roadproblems/treehedge>

<https://www.hants.gov.uk/transport/roadmaintenance/roadproblems/flooding>

APPENDIX I.Iii CLLR JULIET HENDERSON – HCC REPORT – OCTOBER 2024 - continued

<https://www.hants.gov.uk/transport/roadmaintenance/roadproblems/paving>

<https://www.hants.gov.uk/landplanningandenvironment/rightsofway/reportaproblem>

When reporting an issue, you'll be sent an email confirming a reference number for the report. If you would like me to follow this up for you then do please forward that message to me and I will chase for you

HCC Flooding Toolkit

I'm delighted that the proposals for a community toolkit to assist Hampshire's residents and communities identify the risk of, prepare for and mitigate the effect of flooding has been taken forward by Hampshire County Council.

We started this work when the exceptional rain last winter threatened flooding in many areas of the County. Great to see it now deliver in time for this autumn's rains.

To help everyone across Hampshire, we've developed an online guide providing you with lots of information about flooding including which organisations have responsibility for flooding, your responsibilities as a property and/or landowner and advice on how to prepare for flood incidents. The new Community Toolkit can be downloaded from our website here

<https://www.hants.gov.uk/.../envir.../flooding/managing-risk>

Use the links below for flood risk information and to sign up for alerts:

Check your flood risk for the next five days <https://www.gov.uk/check-floodin>

Sign up for flood warnings by phone, text or email <https://www.gov.uk/sign-up-for-flood-warnings>

Check your flood risk over a longer period from rivers, the sea, surface water, reservoirs and groundwater <https://www.gov.uk/check-long-term-flood-risk>

Call the Environment Agency's 24-hour Floodline on 0845 988 1188 to listen to recorded information on the latest warnings and predictions, or to speak to an operator for more general information.

CHECK YOUR FLOOD RISK AHEAD OF WINTER RAINFALL

Around 400,000 households in Hampshire are at risk of flooding and with the potential for increased rainfall because of climate change, particularly during autumn and winter, Hampshire County Council has created a new online tool to help people check their flood risk to help protect homes, land and businesses

Check your flood risk ahead of winter rainfall | Hampshire County Council ([hants.gov.uk](https://www.hants.gov.uk))

APPENDIX I.III WARD CLLR / BDBC REPORT – OCTOBER 2024**Grass cutting and winter maintenance** [To note this applies to BDBC-owned land]

Our grass cutting teams have completed their eighth and final cut of the year across the borough. This was achieved on schedule, despite issues with the weather at times over the summer and periods of very fast growth. The five main teams, which include sub teams covering the rural areas, cut six million square metres of grass on each cycle.

Hedges The majority of hedges and shrubs are on Hampshire County Council highway land and they pay us to cut them once a year. This work is carried out over the winter months, outside of the bird nesting season. However, the team will respond to requests to cut back any overgrown hedges or vegetation on either County Council or Borough Council land which is obstructing footpaths during summer months. Please report these issues online or call the contact centre on 01256 844844.

Weed spraying The second weed spray of the borough is now underway and will take several weeks to complete. It can take a few weeks for weeds to die off once sprayed. The teams are working closely with our new contractors [?] and are monitoring this work closely.

Leaf clearance The street cleansing team will begin its winter leaf fall clearance work in early November, working around areas of the borough until the end of January. Last year the team introduced a new method of leaf fall clearance. This involved working as a team within each ward, before moving onto the next area. Both manual and mechanical sweeping methods were used, which proved to be highly effective and the team will be applying the same method this year.

On-call support A new on-call system was introduced in 2024 which has proved to be highly effective in dealing with urgent issues which arise outside of normal working hours. This will continue and help to ensure the street cleansing and grounds maintenance teams can respond to urgent work during the winter period. Out of hours emergencies can be reported to the Council by calling 01256 844844 and these issues could include urgent waste clearance, for example discarded needles or glass in children's play areas. The teams are also activating their winter maintenance rota to ensure they can respond to adverse weather conditions such as snow and ice.

New grant scheme to support borough's independent retailers

Businesses in Basingstoke's Top of the Town and other towns and **villages across the borough** can now get help to fund improvements to their buildings, following the launch of a new grant scheme. **We have launched the £75,000 Town and Village Centre Fund to support independent high street businesses and landlords to make improvements to their shop fronts, interiors and the creation of new outdoor seating areas. As part of the scheme, new and existing businesses will be able to apply for a grant of up to £10,000 towards the cost of improving their shop fronts and other exterior improvements, such as repainting and signage.**

New businesses will also be able to apply for up to £5,000 to cover the costs of fitting out new retail or hospitality units.

And to support a thriving café culture, hospitality businesses will also be able to apply for up to £3,000 to help them create new outdoor seating areas for their customers.

More information about eligibility and how to apply can be found at our Town and Village Centre Fund webpage. www.basingstoke.gov.uk/town-and-village-centre-fund

Cabinet approve renewal of town centre antisocial drinking order

Plans to renew an order to curb antisocial street drinking in Basingstoke town centre to keep it a safe and welcoming place have been agreed by Cabinet. During a meeting held on Tuesday 08 October, it was agreed to stand firm on the council's robust approach to alcohol-related antisocial behaviour and renew the public space protection order for the town centre area. This decision followed feedback supporting the renewal of the order, that was first put in place in November 2021, received during consultation with residents, businesses and visitors earlier this year.

The order, which will last for three years, makes it an offence to continue to drink alcohol in designated areas after being asked to stop by officers from the police or council. Those who don't comply could receive an on-the-spot fine of £100 or a £1,000 fine if convicted by a magistrates' court.

It covers the town centre, War Memorial Park, Eastrop Park, Glebe Gardens, Holy Ghost Cemetery and small sections of Brookvale, Norden and Eastrop. This is based on evidence of areas where alcohol-related antisocial behaviour has been reported to the police or the council and has had a negative impact on businesses, visitors or residents in the town.

For more information visit our Alcohol related Public Space Protection Orders (PSPOs) webpage.

Fang-tastic activities for children in Basingstoke town centre this half-term

Children will be able to enjoy a frightfully fun programme of activities this October half-term as Love Basingstoke Presents returns to the Top of the Town. Spooktacular fun on offer for children aged between two and 16 years-old includes potion making, pottery painting, slime workshops, trails and dinosaurs. Activities will take place between 11am and 3pm every day from Monday 28 October to Friday 1 November.

To find more information about all these activities, make bookings or to find even more ideas for half-term fun, residents should visit the LoveBasingstoke website and follow Love Basingstoke on social media for any last minute changes.

APPENDIX I.IIIii WARD CLLR / BDBC REPORT – OCTOBER 2024 continued**Council marks the start of Black History Month**

The start of Black History Month was marked by the council with a flag raising and an event to honour the Black communities in the borough. The celebrations began with a flag raising ceremony at the Civic Offices on Tuesday 1 October at 2pm and guests included local community leaders along with representatives from Basingstoke College of Technology, Hampshire Hospitals, Basingstoke and Deane Hate Crime Working Group and the Rotary Club.

Black History Month is a national event that runs throughout October to recognise the invaluable contributions of Black people to British society. This year the theme is 'Reclaiming Narratives' and will encourage Black communities to take control of their stories, celebrate their heritage and ensure their voices are heard.

Events later in the month will include a service at St Bede's Church, a Reclaiming Narratives event in Popley and an awards ceremony at Queen Mary's College.

You can read more information about Black History Month online.

Compliments for council teams

Compliment about Basingstoke's green train station

The Make a Difference team received a compliment from a visitor to the borough about their work to make the front of Basingstoke train station a welcoming and attractive space. They said: "I visited Basingstoke earlier on in the year and loved the greenery in and around the station. Can you please thank the people involved as it made a huge difference to my visit. This is because I had to wait an hour for my friend to arrive from London and, instead of waiting in a cafe, I sat outside and enjoyed the surrounding plants, flowers, trees."

The visitor was so impressed that they have filmed several short clips and compiled them into a YouTube video about Basingstoke's green train station.

Compliment for the Grounds Maintenance team

A customer called the contact centre to thank the Grounds Maintenance team for a quick response to an issue that was raised near her house. The team recently attended and fixed a broken fence and dealt with a bunker. The customer was "thrilled with the work".

Compliments for the Economy and Culture team and Love Basingstoke events programme

The Economy and Culture team received a couple of compliments from people who attended the Love Basingstoke Fri-YAY events programme. They said:

"We always love the sessions you put on and it's a great facility for the town to have every holiday for something free and fun to do!"

"You guys are absolutely brilliant. We are lucky to live in Basingstoke and experience such amazing activities and entertainment. It's fantastic because it brings the community together, we've made numerous new friends trying hard to keep in touch with them all however it's a great feeling to see them again during such events and activities. It really builds a great platform for making social connections with people from different cultures and ethnicities without the use of social media. Thank you to each and every member involved."

Compliment from Thornycroft Bowls and Basingstoke Croquet Club

Play and Sport Manager Bernard Crisp and Sports Team Leader Gerard Beschizza received a compliment from Thornycroft Bowls and Basingstoke Croquet Club. They said: "The croquet and bowls seasons have now ended and I want to thank you and the team for the excellent service that you give us year by year. It really is appreciated."

Compliment for the Rangers

The Rangers received a compliment from a resident through the contact centre. The resident said: "As a local scout leader I would just like to drop a note to say how easy it is to get the car park at the Lime Pits secured slightly later to allow for parental pick up. All that was needed was a call to security and letting you know."

Compliment for the street cleaning teams

The street care and cleaning teams received a compliment from a resident. They said: "Just want to thank all involved in clearing the pavement from Brighton Hill to Kempshott within days of reporting it. You're doing a great job."

Our steps to a greener Basingstoke and Deane

Greener bin collections

The council has saved over half a million tonnes of carbon since it began fuelling its bin trucks with a low-emission biofuel six months ago. The move from diesel to a more environmentally friendly fuel has more than halved the council's carbon footprint, compared to the same period last year, and is part of its work towards becoming a carbon-neutral council by December 2025 to help tackle the climate emergency.

More information about the council's climate action is at our climate action webpage.

APPENDIX II FOOTWAY WORKING GROUP



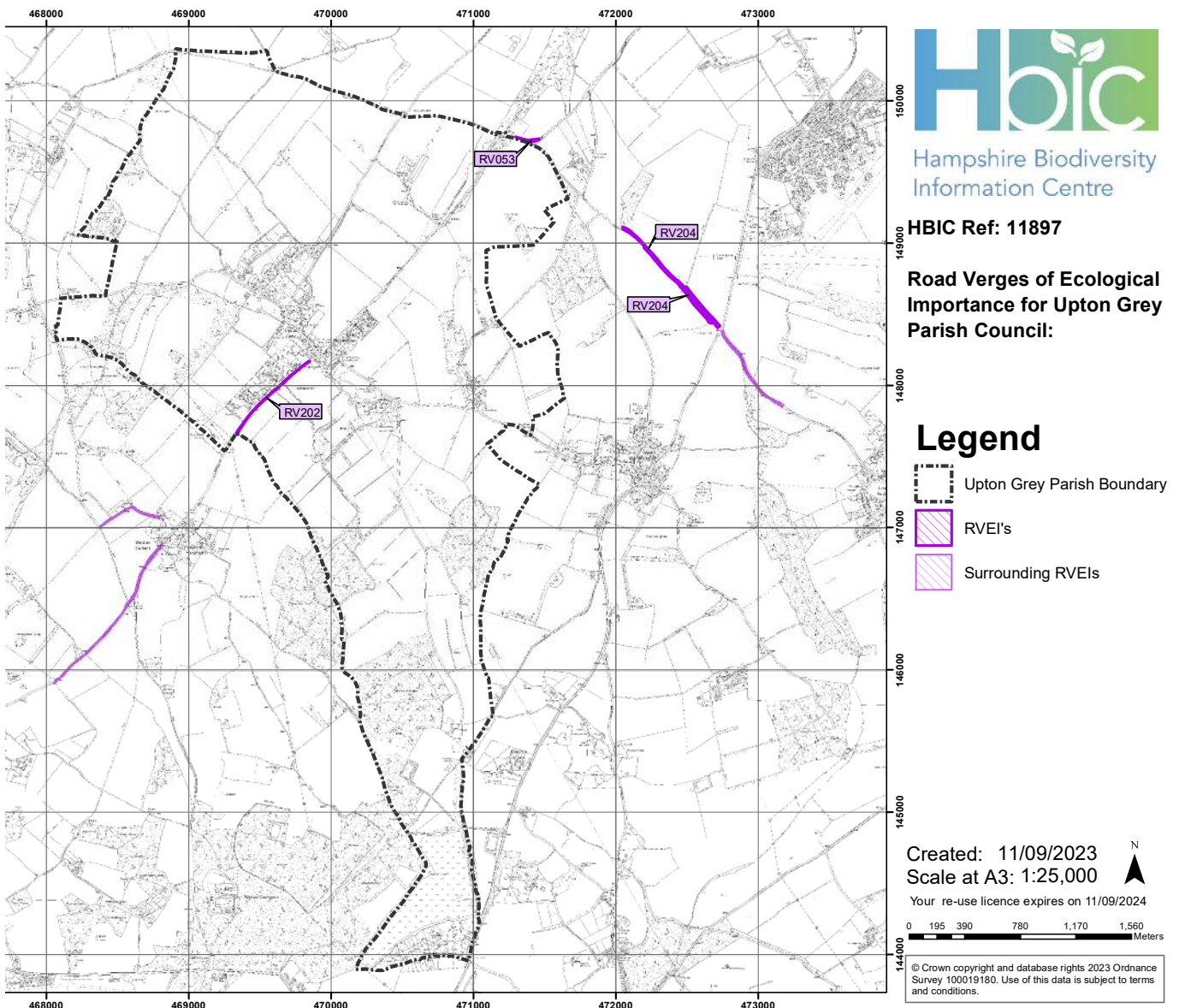
APPENDIX III WESTON ROAD RVEI

Hampshire Biodiversity Information Centre

Details of Road Verges of Ecological Importance (RVEIs) within the search area:

Please see [RVEIs in Hampshire](#) for further details of Road Verges of Ecological Importance in Hampshire.

RVEI Reference	RVEI Name	Grid Reference	Description	Highest other Designation	Interest Type	Interest Features	Period of Interest	Management required	Length (m)
RV053	C12 Bidden Road	SU71394971	North side of the road between U245 Gypsy lane and U245 Four Lanes End	RVEI	Chalk Flora	Dactylorhiza praetermissa (Southern Marsh-orchid), Campanula trachelium (nettle-leaved bellflower)	Jun-Sep	April and Late September cut	174
RV202	C12 Weston Road, Upton Grey	SU69664801	Weston Road, Upton Grey South verge	RVEI	Faunal Interest	Shargacucullia lychnitis Moth (Striped Lychnis)	May-Sep	April cut only	736
RV204	U245 Ford Lane, Hook	SU72384876	Both sides of the road, north of junction with B3349 Alton Road	SINC	Faunal Interest	Shargacucullia lychnitis Moth (Striped Lychnis)	May-Sep	April cut only	969



HBIC Ref: 11897
Road Verges of Ecological Importance for Upton Grey Parish Council:

Legend
 [Dashed line] Upton Grey Parish Boundary
 [Purple shaded area] RVEI's
 [Light purple shaded area] Surrounding RVEIs

Created: 11/09/2023
 Scale at A3: 1:25,000
 Your re-use licence expires on 11/09/2024
 0 195 390 780 1,170 1,560 Meters
 © Crown copyright and database rights 2023 Ordnance Survey 100019180. Use of this data is subject to terms and conditions.

APPENDIX IV – PLANNING UPDATE 16 OCT 2024

NO NEW APPLICATIONS SINCE LAST MEETING

PROGRESS OF RECENT APPLICATIONS

[T/00447/24/TCA](#) (**Approve** 16 Oct, Validated 10 Sep) Keepers House, Hoddington.

T1-T6 Ash: fell.

[24/01755/ROC](#) (**Grant** 03 Oct, Validated 08 August) Upton House Basingstoke Road. Variation of condition 1 of 22/00904/HSE (Part single storey, part two storey extensions to rear. Reconfiguration and extensions to first floor including first floor terrace with balcony. Glazed covered link to single storey games room following demolition of existing. Replacement porch and ground floor bay windows to front elevation.) to allow amendments to the roof, 3 no. new dormer windows, a Juliet balcony and addition of low level plinth wall to existing and extension areas in red facing brick.

[T/00360/24/TCA](#) (**Objections raised by BDBC** 03 Sept, Validated 24 July) 5 Little Hoddington Close. 1 Silver birch: fell.

[24/01021/HSE](#) (**Grant** 24 Sept, Validated 24 May 2024) 17 Little Hoddington. Erection of a part single/part two storey wrap around extension, first floor extension and new front porch to include internal alterations and moving of front door. Installation of air source heat pump. (**Alternative scheme** to that approved under 21/03603/HSE to include additional obscured W/C window on side elevation ground floor and garage roof ridge to be raised by 212mm and to be centralised)

[24/00334/HSE](#) (**Pending** (reconsultation on amended drawings to 18 July), Validated 16 Feb 2024) Foxgloves, Powntley Copse. Demolition of the rear conservatory, detached single storey garage and lean-to and shed structure. Erection of a two storey replacement garage with accommodation incidental to the enjoyment of the dwelling house. Erection of an outdoor structure to cover existing outdoor kitchen, and extension of existing wall around two sides.

*Plus corresponding application to East Hants District - land crosses District border to the South
Objections raised by East Hants (Mar); Ecological appraisal requested by Biodiversity (July).*

[23/03050/FUL](#) (**Refuse** 10 Oct (DC of 09 Oct), Validated 19 Dec 2023) Land At Manor Farm Yard. Erection of 1 no building with 4 no commercial units.

UPDATE ON SOLAR FARM, NORTH WARNBOROUGH, ODIHAM PARISH

[24/01557/AMCON](#) (**Pending**, Validated 08 Aug 2024) Chosley Farm Bidden Road North Warnborough Variation of Condition 2 (approved plans) attached to Planning Permission 20/03185/FUL dated 11/11/2021 to rationalise the approved battery units into a single compound.

[24/01342/AMCON](#) (**Refuse 30 September**, Validated 01 Jul 2024) Chosley Farm, Bidden Road, North Warnborough, Hook. Variation of Condition 2 (approved plans) attached to Planning Permission 20/03185/FUL dated 11/11/2021 to allow for the creation of an alternate construction and emergency access for the site..

[24/00914/AMCON](#) (**Withdrawn 22 May**, Validated 09 May 2024) Chosley Farm, Bidden Road, North Warnborough. Variation of Condition 1 attached to Planning Permission 20/03185/FUL dated 11/11/2021 to extend the time allowed for the implementation of the permission by an additional year from 3 years to 4 years. Out of District consultation from Hart.

[20/03185/FUL](#) (Grant 11 Nov 2021, Validated 21 Jan 2021) Chosley Farm, Bidden Road, North Warnborough. Construction of a Solar Photovoltaic Farm with an output capacity not to exceed 49.9MW of energy, with associated battery storage and supporting infrastructure including inverters and a transformer, fencing, CCTV installation and landscaping works

LODGE FARM – PREAPP – ODIHAM PARISH

[23/02242/PREAPP](#) (**'Opinion issued' 12 July – This was apparently verbal response to Developer in meeting - no written Officer Report posted to website as yet**) Validated 09 Oct 2023) Land At Lodge Farm Hook Road North Warnborough. PREAPP re Outline proposal for circa 105,000 sqm GIA of commercial logistics floorspace (Use Class B2/B8) with ancillary office accommodation, associated car parking provision, plus landscaping and highway works.

APPENDIX VI.I – BUDGET UPDATE – EXPEND

		UG Y/E COMPARISON / LATEST ESTIMATE @ 16 OCT			BUDGET
2022/23 YEAR END	2023/24 YEAR END	EXPENDITURE	2024/25 TO DATE	2024/25 LATEST EST	24/25 BUDGET FULL - MAR
£8,042.76	£8,844.00	Salaries	£4,688.52	£9,374.64	£9,374.64
£240.00		Clerk's allowance	£240.00	£480.00	£240.00
		Expenses		£70.00	£70.00
£340.00		Training		£300.00	£300.00
£1,601.89	£1,454.34	Finance/Governance	£1,591.46	£1,800.00	£1,800.00
		Legal costs (VH)	£855.00	£855.00	
£4,244.20	£865.00	Grants to Community	£529.00	£3,003.88	£3,500.00
	£2,000.00	Grant to Village Hall	£496.12	£496.12	
£750.00	£6,909.59	Village Hall	£1,200.00	£1,200.00	
	£300.00	SID management	£600.00	£900.00	£900.00
		MAINTENANCE			
£2,911.00	£3,313.00	Maintenance contract	£1,709.00	£3,425.00	£3,412.50
£675.00		Pond fence			
		Pond tree(Pear&Alder)	£710.93		
	£1,190.00	Pond clearing		£2,000.00	£2,000.00
	£1,750.00	Liner & bank repair			
	£422.91	Playground Inspection	£265.22	£750.00	£750.00
		Play equip repair			
£135.45	£298.45	Maintenance general	£50.65	£1,000.00	£1,000.00
		Assets / captial expend			
£2,000.00	£495.00	Tennis		£500.00	£500.00
	PROJECTS	PROJECTS			
	£450.83	Jubilee trees			
	£399.75	VH cutlery			
	£1,495.00	VH energy efficiency			
	£5,357.82	VH-BDBC-CIL-kitchen	£4,492.18	£4,492.18	£4,142.18
		Weston Road footway	£37.62	£500.00	
£1,217.09	£4,278.36	VAT - expend	£1,810.34	£1,810.34	
£22,157.39	£39,824.05	TOTAL EXPEND	£19,276.04	£32,957.16	£27,989.32
£20,157.39	£39,329.05	Expend less tennis	£19,276.04	£32,457.16	£27,489.32

APPENDIX VI.II – BUDGET UPDATE – INCOME / BALANCE

UG Y/E COMPARISON / LATEST ESTIMATE @ 16 OCT					BUDGET
2022/23 YEAR END	2023/24 YEAR END		2024/25 TO DATE	2024/25 LATEST EST	24/25 BUDGET FULL - MAR
		INCOME			
£15,250.00	£18,605.00	Precept	£22,326.00	£22,326.00	£22,326.00
£1,279.67	£1,292.47	Grass Cutting Grant	£1,292.47	£1,292.47	£1,305.39
	£2,000.00	Grants other			
		County Cllr Grant	£500.00	£500.00	
£569.40	£850.40	Ward Cllr grants			
	£1,495.00	HCC PTA grant			
		VH-BDBC-CIL-kitchen	£9,500.00	£9,500.00	£9,850.00
£1,700.00	£1,710.00	Tennis subs		£1,800.00	£1,700.00
£29.34	£372.17	Bank Interest	£201.66	£300.00	£300.00
	£3,743.33	VAT reclaim		£3,656.46	
£18,828.41	£30,068.37	TOTAL INCOME	£33,820.13	£39,374.93	£35,481.39
£17,128.41	£28,358.37	Income less tennis	£33,820.13	£37,574.93	£33,781.39

UG Y/E COMPARISON / LATEST ESTIMATE @ 16 OCT					BUDGET
2022/23	2023/24		2024/25 TO DATE	2024/25 LATEST EST	24/25 BUDGET FULL - MAR
		BALANCE			
£3,328.98	£9,755.68	SURPLUS / DEFICIT	£14,544.09	£6,417.77	£7,281.51
£34,891.15	£25,135.47	Balance	£39,679.56	£31,553.24	£29,531.98
£300.00	£1,215.00	SURPLUS / DEFICIT - TENNIS	£0.00	£1,300.00	£1,200.00
£3,028.98	£10,970.68	SURPLUS / DEFICIT - PC	£14,544.09	£5,117.77	£6,081.51
£9,583.48	£10,798.48	BAL - tennis	£10,798.48	£12,098.48	£11,998.48
£25,307.67	£14,336.99	BALANCE - PC	£28,881.08	£19,454.76	£20,418.50

APPENDIX VII FREE LARGE STANDARD TREES from the Hampshire Forest Partnership

Date: 16 October 2024 at 11:08:40 BST

Hampshire Forest Partnership has been successful in receiving a grant from the Nature for Climate Fund which means we have over 300 large standard trees to give away to communities for FREE! They will come with stakes and guards and we may even be able to help you plant them if you have no other alternatives.

Many of the trees we have managed to get hold of are disease resistant elm standards of 3 different variants; New Horizon, Fiorente and Rebona. They come in sizes 8-10 and 10-12. These sizes are based on the circumference of the tree at 1m height. See tab 1 on the attached for explanations of sizes.

All of these trees are very important as they have been bred by scientists to resist Dutch Elm disease and as a result will not succumb to the disease and should grow into large successful specimens. As you may be aware, currently the English elm dies when it reaches a certain height due to the Dutch elm disease, so they never become mature. Sadly, the white-letter hairstreak butterfly is now endangered as they rely on these trees as their sole food supply, but they must be mature trees.

I have attached photos of the 3 varieties so you can see what they look like after a few years – as you can see they are beautiful trees! I have also attached a photo to show the current size of the 8-10s to give you an idea. These are the actual trees we will be supplying.

I am emailing you as we are looking to allocate sites for these trees across the Hampshire Countryside to bring these majestic trees back to Hampshire. I am asking you to join our re-elmimg of Hampshire and hope you are able to locate some of these trees. It's all part of Hampshire County Council's Million Trees Challenge. Join the Hampshire Million Tree Challenge! | Hampshire County Council (hants.gov.uk) and we hope you can become a part of something special that will leave a legacy for future generations.

To secure your trees, please complete the relevant tab on the attached spreadsheet and return it to me ASAP. I am hoping to allocate all trees by the end of this month. We also have other species, not just elms, so if you are interested in these, please do also note numbers of each species required.

It is very important that you provide us with the locations where you will plant the trees as we are mapping this in order to help us develop an accurate record of where all the trees will be planted – it enables us to monitor the recovery of the white-letter hairstreak butterfly.

SENIOR PROJECT MANAGER

Tree Strategy and 2050 Tree Planting Programme

Hampshire County Council Countryside Service

STANDARD Tree Species Available (all in 45l p
Aesculus indica (Indian Horse Chestnut)
Carpinus betulus (Hornbeam)
Carpinus bet. 'Lucas' (Hornbeam variant)
Crataegus monogyna (Hawthorn)
Juglans regia (English Walnut)
Sorbus aria 'Majestica' (Whitebeam variant)
Sorbus auc. 'Fingerprint' (Mountain Ash tree variant)
Sorbus 'Dodong' (Japanese Scarlet Rowan)
Tilia cordata 'Streetwise' (Small leaved lime variant)
Tilia europaea 'Pallida' (Common lime)
Ulmus New (disease resistant elm)
Ulmus New Horizon (disease resistant elm)
Ulmus fiorente (disease resistant elm)
Ulmus fiorente (disease resistant elm)
Ulmus rebona (disease resistant elm)
2 stakes and tree ties are provided for all trees. Please
Your Name:
Your Organisation:
Site location:
Address for delivery:
Email address: